

1	-833844.207	-1109867.190	405.831	76	-833671.826	-1109808.519	407.047
2	-833841.476	-1109865.718	405.800	77	-833447.382	-1109928.893	410.145
3	-833834.118	-1109863.814	405.686	78	-833446.643	-1109929.276	410.158
4	-833830.903	-1109862.909	405.634	79	-833441.341	-1109927.619	410.200
5	-833823.478	-1109860.651	405.516	80	-833438.518	-1109922.456	410.150
6	-833811.179	-1109852.138	405.380	81	-833435.854	-1109923.837	410.200
7	-833791.493	-1109826.516	405.364	82	-833438.105	-1109927.954	410.220
8	-833843.872	-1109867.561	405.871	83	-833435.873	-1109932.366	410.334
9	-833841.350	-1109866.202	405.840	84	-833435.873	-1109932.366	410.334
10	-833833.993	-1109864.298	405.726	85	-833412.428	-1109935.523	410.689
11	-833830.758	-1109863.388	405.674	86	-833402.529	-1109936.755	410.840
12	-833823.332	-1109861.129	405.556	87	-833157.759	-1109964.738	415.971
13	-833810.782	-1109852.443	405.420	88	-833437.666	-1109928.194	410.180
14	-833791.903	-1109827.870	405.367	89	-833435.806	-1109931.871	410.294
15	-833792.270	-1109825.065	405.331	90	-833412.361	-1109935.027	410.649
16	-833793.117	-1109824.414	405.316	91	-833402.472	-1109936.258	410.800
17	-833790.376	-1109820.846	405.360	92	-833157.702	-1109964.241	415.931
18	-833789.528	-1109821.497	405.360	93	-833154.437	-1109962.098	416.070
19	-833786.724	-1109821.130	405.408	94	-833154.934	-1109962.041	416.070
20	-833773.861	-1109804.389	405.386	95	-833150.960	-1109962.495	416.070
21	-833787.926	-1109821.874	405.393	96	-833151.457	-1109962.439	416.070
22	-833774.265	-1109804.094	405.346	97	-833154.536	-1109962.590	416.050
23	-833774.887	-1109803.640	405.410	98	-833151.472	-1109962.940	416.081
24	-833772.418	-1109799.871	405.400	99	-833148.817	-1109965.760	416.223
25	-833771.216	-1109800.748	405.408	100	-833059.893	-1109975.926	419.188
26	-833766.596	-1109792.015	405.463	101	-833031.552	-1109969.377	421.221
27	-833758.753	-1109772.806	406.313	102	-833028.420	-1109967.378	421.295
28	-833749.807	-1109767.980	406.476	103	-833027.196	-1109961.860	421.180
29	-833746.982	-1109768.534	406.495	104	-833148.760	-1109965.263	416.183
30	-833771.621	-1109800.453	405.396	105	-833059.837	-1109975.429	419.148
31	-833767.059	-1109791.826	405.423	106	-833031.821	-1109968.955	421.181
32	-833759.197	-1109772.570	406.271	107	-833028.689	-1109966.957	421.255
33	-833749.692	-1109767.442	406.415	108	-833027.618	-1109962.128	421.100
34	-833746.876	-1109767.994	406.435	109	-833700.785	-1109779.122	406.844
35	-833842.554	-1109869.066	405.912	110	-833700.105	-1109779.255	406.849
36	-833840.614	-1109867.953	405.876	111	-833690.589	-1109786.143	406.924
37	-833821.176	-1109862.285	405.574	112	-833683.121	-1109799.454	407.002
38	-833810.179	-1109854.119	405.455	113	-833672.535	-1109809.841	407.077
39	-833772.048	-1109804.491	405.420	114	-833448.091	-1109930.215	410.175
40	-833765.207	-1109792.582	405.493	115	-833437.406	-1109933.673	410.344
41	-833757.831	-1109774.516	406.304	116	-833412.628	-1109937.010	410.719
42	-833748.885	-1109769.689	406.514	117	-833402.699	-1109938.245	410.870
43	-833747.270	-1109770.006	406.525	118	-833060.064	-1109977.416	419.218
44	-833841.181	-1109870.520	405.951	119	-833030.745	-1109970.641	421.251
45	-833838.028	-1109868.734	405.870	120	-833701.074	-1109780.594	406.874
46	-833820.926	-1109863.533	405.597	121	-833691.558	-1109787.482	406.958
47	-833809.380	-1109855.541	405.488	122	-833684.429	-1109800.188	407.032
48	-833771.104	-1109805.725	405.448	123	-833673.244	-1109811.162	407.107
49	-833763.666	-1109792.775	405.528	124	-833448.800	-1109931.537	410.205
50	-833757.064	-1109776.606	406.260	125	-833437.606	-1109935.160	410.374
51	-833747.559	-1109771.478	406.555	126	-833412.828	-1109938.496	410.749
52	-833840.846	-1109870.891	405.911	127	-833402.870	-1109939.736	410.900
53	-833837.882	-1109869.213	405.830	128	-833060.234	-1109978.906	419.248
54	-833820.780	-1109864.011	405.557	129	-833029.938	-1109971.906	421.281
55	-833808.984	-1109855.846	405.448	130	-833026.953	-1109970.001	421.354
56	-833770.708	-1109806.029	405.408	131	-833701.170	-1109781.084	406.834
57	-833763.203	-1109792.964	405.488	132	-833691.994	-1109787.726	406.918
58	-833756.601	-1109776.795	406.220	133	-833684.865	-1109800.433	406.992
59	-833747.655	-1109771.969	406.515	134	-833673.480	-1109811.603	407.067
60	-833700.391	-1109777.110	406.754	135	-833449.036	-1109931.977	410.165
61	-833699.072	-1109777.369	406.762	136	-833437.673	-1109935.656	410.334
62	-833689.217	-1109784.503	406.850	137	-833412.895	-1109938.992	410.709
63	-833681.376	-1109798.476	406.932	138	-833402.926	-1109940.232	410.860
64	-833671.590	-1109808.078	407.007	139	-833060.291	-1109979.403	419.208
65	-83447.145	-1109928.452	410.105	140	-833029.669	-1109972.327	421.241
66	-83446.419	-1109928.829	410.118	141	-833026.684	-1109970.423	421.314
67	-83441.780	-1109927.379	410.164	142	-833024.196	-1109966.462	421.280
68	-83438.722	-1109921.787	410.170	143	-833021.359	-1109971.336	421.400
69	-83438.278	-1109922.017	410.170	144	-833021.790	-1109971.590	421.320
70	-83435.614	-1109923.398	410.250	145	-833706.827	-1109789.961	406.040
71	-83435.170	-1109923.628	410.250	146	-833706.936	-1109790.520	406.040
72	-833700.496	-1109777.650	406.814	147	-833693.274	-1109792.618	406.330
73	-833699.136	-1109777.917	406.823	148	-833693.384	-1109793.178	406.330
74	-833689.620	-1109784.804	406.891	149	-833689.876	-1109795.078	406.420
75	-833681.813	-1109798.720	406.972	150	-833686.325	-1109801.406	406.570

Výřez 3

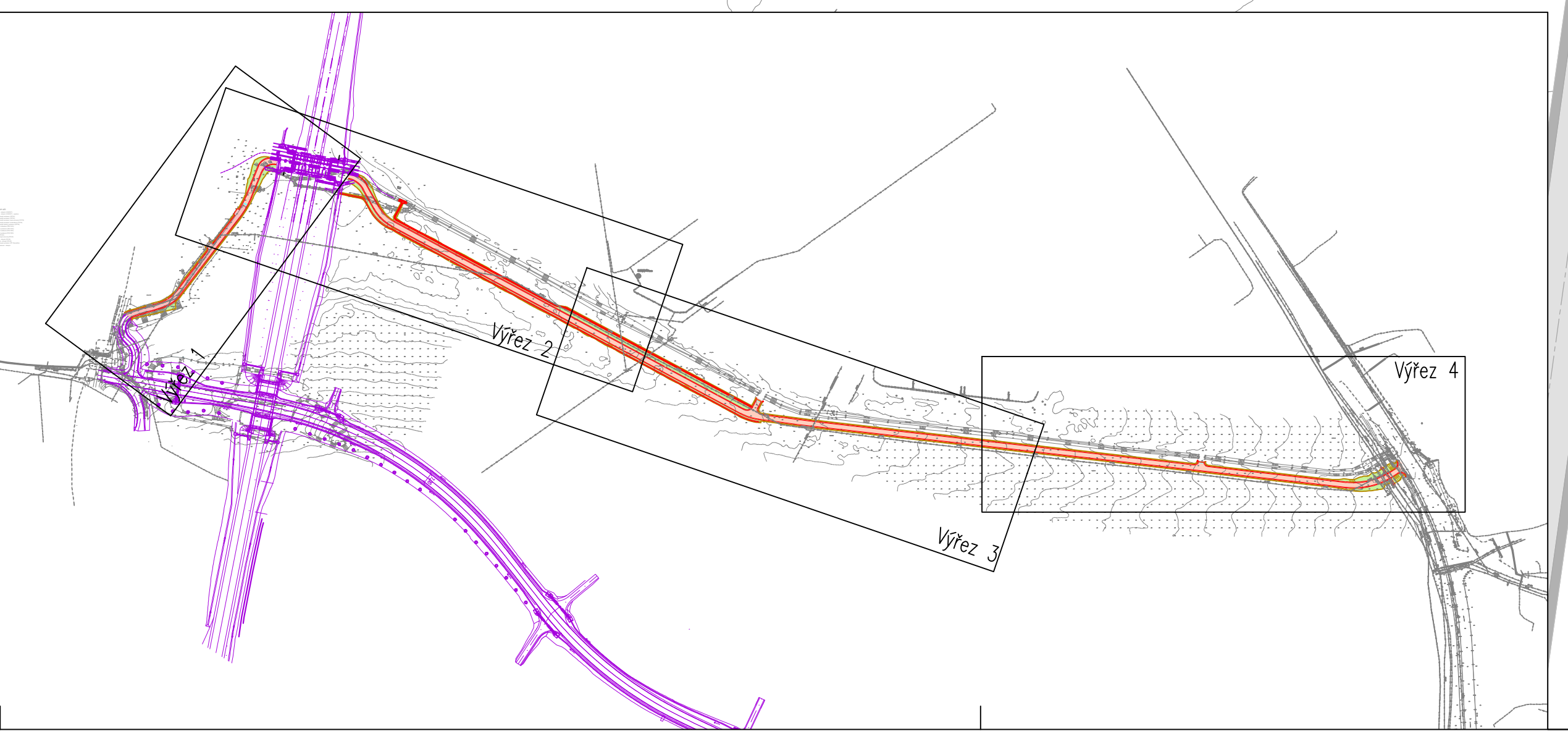
80,4g
+1,50%
270,00

0,4

0,5

0,6

R=1144,13
+1,50%
270,00
-10,00



Legenda - navržená stavba:

Osa komunikace

Snižená betonová obruba tl. 10 cm

Sklápená betonová obruba tl. 30 cm

Betonová žlabovka š. 60 cm

Účelová komunikace - asfaltobeton

Stezka - asfaltobeton

Nezpevněná krajnice - štěrkořt

Ostatní plochy:

Koryto vodního toku - dlažba z lomového kamene

Koryto vodního toku - zához z lomového kamene

Koryto vodního toku - kamenný stabilizační práh

Svahování + ohrumsování

OPATŘENÍ PRO NEVĚDOMÉ:

Varovný pás

ÚSEK C - PODJEZD POD PŘELOŽKOU KOMUNIKACE I/27

Snižená betonová obruba tl. 10 cm

Stezka - litý asfalt

Ostatní plochy v podjezdu - dlažba

Nezpevněná krajnice - štěrkořt

Svahování + ohrumsování

Strom kácený
Bez potřeby povolení kácení / s potřebou povolení

Trat' 185 - Osa koleje

Výřezovací bod

Legenda inženýrských sítí:

Plynovodní řád STL - stávající (GASNET)

Plynovodní řád VTL - stávající (GASNET) - vytyčeno

Sdělovací kabel - stávající nadzemní (CETIN)

Sdělovací kabel - stávající podzemní (CETIN)

Sdělovací kabel - stávající podzemní nezaměřený (CETIN)

Sdělovací kabel - stávající optický, podzemní (CETIN)

Elektro NN - stávající podzemní (CETIN)

Elektro NN - stávající nadzemní (ČEZ DSO)

Elektro NN - stávající podzemní (ČEZ DSO)

Elektro VN - stávající nadzemní (ČEZ DSO)

Elektro VN - stávající podzemní (ČEZ DSO)

Vodovod - stávající (ŠVAK)

Vodovod - stávající neprovozovaný (ŠVAK)

Kanalizace dešťová - stávající (ŠVAK)

Kanalizace splašková - stávající (ŠVAK)

Sdělovací kabel - stávající podzemní (ČD Telematika)

Chránička - dělená HDPE, DN10

151	-833676.339	-1109811.205	406.710	171	-833663.805	-1109797.154	
152	-833449.508	-1109932.858	410.030	172	-833663.557	-1109796.689	
153	-833437.806	-1109936.647	410.270	173	-833663.425	-1109796.419	
154	-833436.949	-1109936.762	410.290	174	-833663.324	-1109795.928	
155	-833437.025	-1109937.327	410.290	175	-833664.248	-1109795.435	406.400
156	-833437.882	-1109937.211	410.270	176	-833671.300	-1109804.833	406.610
157	-833449.778	-1109933.361	410.030	177	-833670.771	-1109805.115	406.610
158	-833676.608	-1109811.707	406.710	178	-833670.475	-1109807.558	406.640
159	-833686.823	-1109801.685	406.470	179	-833442.456	-1109927.508	410.170
160	-833690.373	-1109795.357	406.420	180	-833560.590	-1109864.534	407.960
161	-833668.180	-1109793.882		181	-833561.906	-1109864.030	407.940
162	-833668.417	-1109794.326		182	-833567.196	-1109862.726	407.870
163	-833668.559	-1109794.592		183	-833568.665	-1109862.161	407.850
164	-833668.796	-1109795.036		184	-833568.381	-1109861.632	407.850
165	-833667.017	-1109795.739		185	-833567.052	-1109862.143	407.868
166	-833667.146	-1109795.981		186	-833561.763	-1109863.447	407.946
167	-833666.699	-1109796.205	406.360	187	-833560.307	-1109864.005	407.960
168	-833666.169	-1109796.487	406.360	188	-833442.174	-1109926.978	410.167
169	-833665.519	-1109796.331		189	-833670.192	-1109807.029	406.640
170	-833664.864	-1109796.590	406.360	190	-833665.735	-1109796.734	

ČÍSLO REVIZE	DATUM REVIZE	POPIS REVIZE
2.		
1.		

PROJEKCE DOPRAVNÍ FILIP s.r.o.
Svěrmova 1338, 413 01 Roudnice nad Labem
ICO: 28714782, DIČ: CZ28714782
HlP: Ing. Luboš Thomayer

OSLOVENÝ ÚSTŘEDÍ
SLOVENSKÝ ÚSTŘEDÍ

OSTRAVA

Investor: Město Klatovy, nám. Miru 62, 339 01 Klatovy

KÚ: Luby (665976), Soběšice u Klatov (665959)

Zodpovědný projektant: Ing. Josef Filip, Ph.D.

Vypracoval: Ing. Petr Vopalecký

Datum: 04/2023

Číslo zakázky: 22-015-3-02

Formát: A4: 12

Stupeň: DPS

Zakázka: KLATOVY - CYKLOSTEZKA LUBY - SOBĚŠICE

Měřítko: 1:250

Příloha: VYTYČOVACÍ VÝKRES - ČÁST 3

Číslo přílohy: D.101.7.3